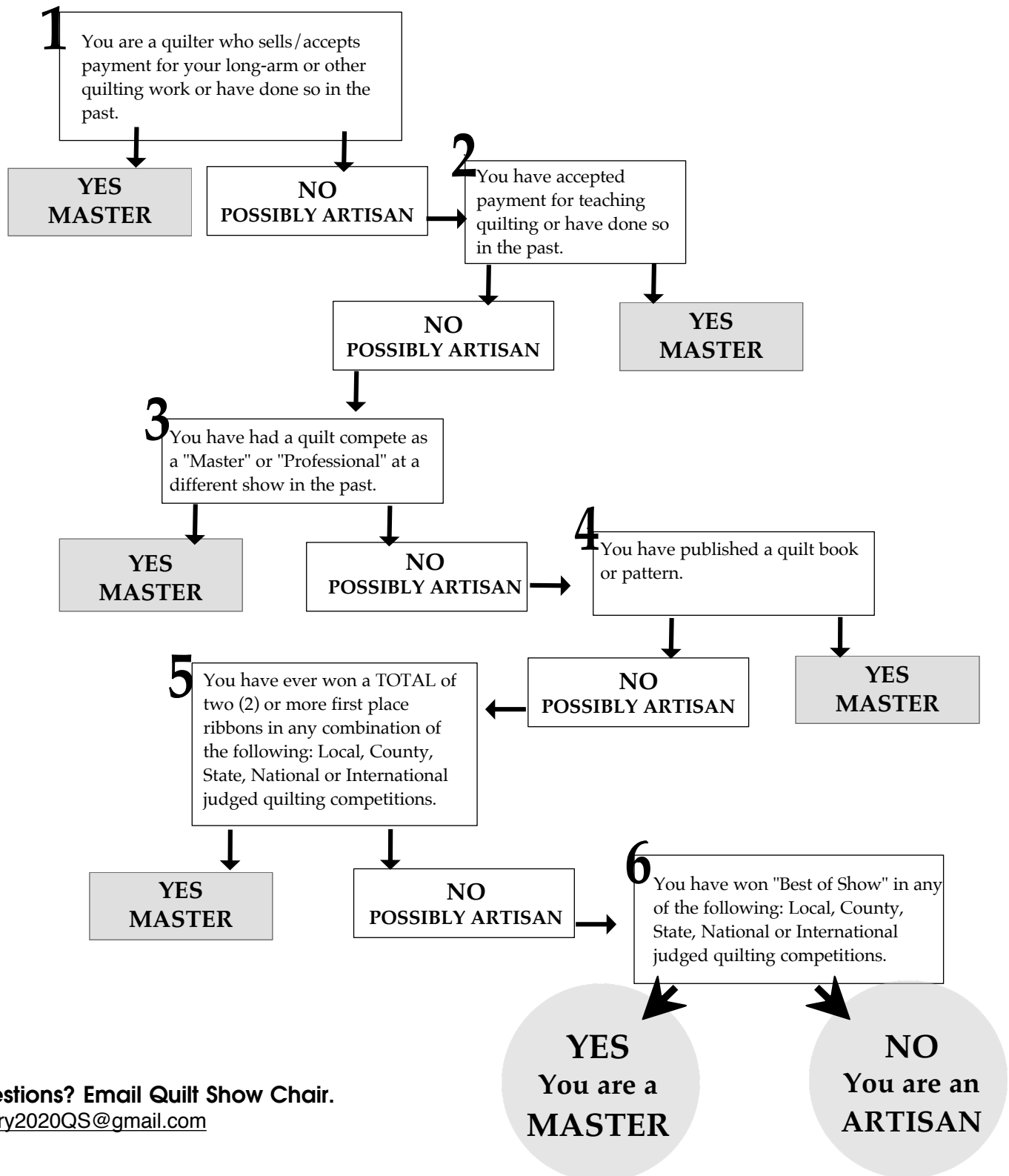


Judged Quilt Entries Only

Are you a "Master" or an "Artisan"?

Use this flow chart to help you to determine in which division to place your **quilt entries** for judging. *Master/Artisan designations do not apply to non-quilt categories such as wearables fiber arts, challenges, etc., which will be judged in the **Open Division** (If your entries are for exhibit-only (not to be judged), this chart does not apply.)*



Questions? Email Quilt Show Chair.
sherry2020QS@gmail.com